

Interventions to reduce colonisation and transmission of antimicrobial-resistant bacteria in intensive care units: an interrupted time series study and cluster randomised trial



Lennie P G Derde, Ben S Cooper, Herman Goossens, Surbhi Malhotra-Kumar, Rob J L Willems, Marek Gniadkowski, Waleria Hryniewicz, Joanna Empel, Mirjam J D Dautzenberg, Djillali Annane, Irene Aragão, Annie Chalfine, Uga Dumpis, Francisco Esteves, Helen Giamarellou, Igor Muzlovic, Giuseppe Nardi, George L Petrikos, Viktorija Tomic, Antonio Torres Martí, Pascal Stammet, Christian Brun-Buisson*, Marc J M Bonten*, on behalf of the MOSAR WP3 Study Team

Summary

Background Intensive care units (ICUs) are high-risk areas for transmission of antimicrobial-resistant bacteria, but no controlled study has tested the effect of rapid screening and isolation of carriers on transmission in settings with best-standard precautions. We assessed interventions to reduce colonisation and transmission of antimicrobial-resistant bacteria in European ICUs.

Methods We did this study in three phases at 13 ICUs. After a 6 month baseline period (phase 1), we did an interrupted time series study of universal chlorhexidine body-washing combined with hand hygiene improvement for 6 months (phase 2), followed by a 12–15 month cluster randomised trial (phase 3). ICUs were randomly assigned by computer generated randomisation schedule to either conventional screening (chromogenic screening for methicillin-resistant *Staphylococcus aureus* [MRSA] and vancomycin-resistant enterococci [VRE]) or rapid screening (PCR testing for MRSA and VRE and chromogenic screening for highly resistant Enterobacteriaceae [HRE]); with contact precautions for identified carriers. The primary outcome was acquisition of resistant bacteria per 100 patient-days at risk, for which we calculated step changes and changes in trends after the introduction of each intervention. We assessed acquisition by microbiological surveillance and analysed it with a multilevel Poisson segmented regression model. We compared screening groups with a likelihood ratio test that combined step changes and changes to trend. This study is registered with ClinicalTrials.gov, number NCT00976638.

Findings Seven ICUs were assigned to rapid screening and six to conventional screening. Mean hand hygiene compliance improved from 52% in phase 1 to 69% in phase 2, and 77% in phase 3. Median proportions of patients receiving chlorhexidine body-washing increased from 0% to 100% at the start of phase 2. For trends in acquisition of antimicrobial-resistant bacteria, weekly incidence rate ratio (IRR) was 0.976 (0.954–0.999) for phase 2 and 1.015 (0.998–1.032) for phase 3. For step changes, weekly IRR was 0.955 (0.676–1.348) for phase 2 and 0.634 (0.349–1.153) for phase 3. The decrease in trend in phase 2 was largely caused by changes in acquisition of MRSA (weekly IRR 0.925, 95% CI 0.890–0.962). Acquisition was lower in the conventional screening group than in the rapid screening group, but did not differ significantly ($p=0.06$).

Interpretation Improved hand hygiene plus unit-wide chlorhexidine body-washing reduced acquisition of antimicrobial-resistant bacteria, particularly MRSA. In the context of a sustained high level of compliance to hand hygiene and chlorhexidine bathings, screening and isolation of carriers do not reduce acquisition rates of multidrug-resistant bacteria, whether or not screening is done with rapid testing or conventional testing.

Funding European Commission.

Introduction

Antimicrobial-resistant bacteria have become more widespread worldwide. Intensive care units (ICUs) are especially affected by three major groups of highly resistant pathogens—methicillin-resistant *Staphylococcus aureus* (MRSA), vancomycin-resistant enterococci (VRE), and highly resistant (ie, resistant to third-generation or fourth-generation cephalosporins) Enterobacteriaceae (HRE). Controlling the spread of these organisms is a major public health challenge and often involves labour-intensive, protracted efforts. Several control measures have been advocated¹ including improved adherence to

standard precautions,² chlorhexidine body-washing,^{3–9} introduction of contact precautions for known carriers of antimicrobial-resistant bacteria and putting carriers in single-patient rooms,^{10,11} and rapid detection of carriers at admission to ICU combined with isolation of carriers. However, evidence for these interventions is mainly based on small, quasi-experimental studies. Universal screening of patients at ICU admission for antimicrobial-resistant bacteria followed by contact precautions—a costly and labour-intensive intervention—remains the most controversial, with conflicting results precluding evidence-based recommendations.¹²

Published Online
October 23, 2013
[http://dx.doi.org/10.1016/S1473-3099\(13\)70295-0](http://dx.doi.org/10.1016/S1473-3099(13)70295-0)

See Online/Comment
[http://dx.doi.org/10.1016/S1473-3099\(13\)70305-0](http://dx.doi.org/10.1016/S1473-3099(13)70305-0)

Copyright © Derde et al. Open Access article distributed under the terms of CC BY-NC-SA

*Equally responsible for supervising the study

Department of Intensive Care Medicine (L P G Derde MD), Department of Medical Microbiology (R J L Willems PhD, M J M Bonten PhD), Julius Center for Health Sciences and Primary Care (M J D Dautzenberg MD, M J M Bonten), University Medical Center Utrecht, Utrecht, Netherlands; Centre for Clinical Vaccinology and Tropical Medicine, Nuffield Department of Clinical Medicine, University of Oxford, Oxford, UK (B S Cooper PhD); Department of Medical Microbiology, Vaccine & Infectious Disease Institute, Antwerp University, University Hospital Antwerp, Antwerp, Belgium (H Goossens PhD, S Malhotra-Kumar PhD); Department of Molecular Microbiology (M Gniadkowski PhD, J Empel PhD), Division of Microbiology and Infection Prevention (W Hryniewicz PhD), National Medicines Institute, Warsaw, Poland; Service de Réanimation Médicale, Hôpital Raymond Poincaré, Garches, France (D Annane PhD); Polyvalent Intensive Care Unit, Central Hospital of Porto, Porto, Portugal (I Aragão MD); Infection Control Unit, Groupe Hospitalier Paris—Saint Joseph, Paris, France (A Chalfine MD); Department of Infection Control, Paul Stradins University Hospital, Riga,

Latvia (U Dumpis MD); ICU and Emergency Department, Centro Hospitalar Trás-os-Montes e Alto Douro, Vila Real, Portugal (F Esteves MD); 4th Department of Internal Medicine, Athens University Medical School, Attikon General Hospital, Athens, Greece (H Giamarellou PhD); Clinic for Infectious Diseases and Febrile Illnesses, University Medical Centre Ljubljana, Ljubljana, Slovenia (I Muzlovic PhD); Shock and Trauma Unit, Intensive Care Unit, Azienda Ospedaliera S Camillo Forlanini, Rome, Italy (G Nardi PhD); Infectious Diseases Unit, Laikon General Hospital, University of Athens, Athens, Greece (G L Petrikos PhD); Laboratory for Respiratory Microbiology, University Clinic of Respiratory and Allergic Diseases, Golnik, Slovenia (V Tomic PhD); Servei de Pneumologia, Hospital Clinic, University of Barcelona, Barcelona, Spain (A Torres Martí PhD); Intensive Care Unit, Centre Hospitalier de Luxembourg, Luxembourg, Luxembourg (P Stammel MD); and Service de réanimation médicale and INSERM U657, Institut Pasteur, APHP GH Henri Mondor, Université Paris Est-Créteil, Creteil, France (C Brun-Buisson PhD)

Correspondence to: Lennie P G Derde, Department of Intensive Care Medicine, University Medical Center Utrecht, Universiteitsweg 100, 3584 CG Utrecht, Netherlands lderde@umcutrecht.nl

See Online for appendix

No controlled study has tested the effect of rapid screening and isolation of carriers on colonisation with antimicrobial-resistant bacteria in settings that already have best standard precautions in place. We assessed the effect of different infection control strategies on acquisition of antimicrobial-resistant bacteria in ICUs.

Methods

Study design and participants

We assessed 13 European ICUs between May, 2008, and April, 2011, in three phases. Implementation of costly and labour-intensive interventions—eg, screening and isolation—is probably futile in the absence of good basic hygiene. Therefore, after a 6 month baseline period (phase 1), we introduced a hygiene improvement programme at all ICUs in an interrupted time-series phase (phase 2) before beginning a cluster randomised, controlled phase (phase 3). In phase 2, we tested the effect of optimised hand hygiene plus unit-wide implementation of chlorhexidine body-washing on acquisition of antimicrobial-resistant bacteria. In phase 3, we tested the additional effect of screening followed by contact precautions for identified carriers, using either PCR for MRSA and VRE together with chromogenic screening for HRE (rapid screening), or chromogenic-based screening for MRSA and VRE only (conventional screening).

Interrupted time series are useful if a randomised controlled trial is not feasible.^{13,14} We planned to use a stepped-wedge design for phase 2 but this proved impractical because of logistical and financial constraints. However, we did enrol ICUs consecutively to account for seasonal effects.

We aimed to include ICUs with a moderate to high proportion of resistant bacteria. Adult ICUs with at least eight beds were eligible, provided that—of the ICU-acquired bacteraemias recorded in 2006 or 2007—MRSA accounted for more than 10% of *S aureus* bacteraemias, VRE accounted for more than 5% of enterococcal bacteraemias, or extended-spectrum β -lactamase resistance accounted for more than 10% of Enterobacteriaceae bacteraemias.

Each institution's review board or national ethics committee approved the study protocol. Because the study involved very little risk of harm to patients, a waiver for informed consent was sought and granted for all participating centres.

Randomisation and masking

After phase 2, the 13 ICUs were randomly assigned (1:1) to the rapid or conventional screening groups. The sequence for allocation was based on a computer-generated randomisation list, generated by an independent data manager who had no other role in the study. We did not match ICUs and no masking was used.

Procedures

Surveillance swabs from perineum, nose, and wounds (if present) were obtained within 2 days of admission to the

ICU, then twice per week for 3 weeks, then once per week thereafter, for all patients admitted to ICU for 3 days or more. All surveillance swabs were analysed locally, according to a standardised protocol (appendix). Chromogenic media was used for detection of MRSA (BBL CHROMagar MRSA II; Becton, Dickinson and Company, Franklin Lakes, NJ USA), BBL Enterococcosel Agar with vancomycin 8 μ g/mL for detection of VRE (Becton, Dickinson and Company), and Brilliance ESBL 2 for detection of HRE (Oxoid, Cambridge, UK).^{15–17} In ICUs assigned to rapid screening, Xpert MRSA and Xpert VanA/VanB (Cepheid, Sunnyvale, CA, USA) were used additionally.^{18,19}

All microbiology laboratories were required to complete proficiency panels.^{20–22} All first isolates of MRSA, VRE, and HRE from surveillance cultures or blood were shipped to a central laboratory for species confirmation, susceptibility testing, and genotyping. To assess chlorhexidine resistance, the presence of *qacA* and *qacB* genes was investigated by PCR at the central laboratory.^{2,23}

After phase 1, we implemented a hand hygiene improvement programme and universal daily body-washing with 0.16 g/L chlorhexidine gluconate for 6 months (phase 2) in all ICUs. We derived the hand hygiene programme from the WHO's Five Moments for Hand Hygiene concept.^{2–7,24}

These interventions continued in phase 3 alongside screening and contact precautions for carriers of antimicrobial-resistant bacteria (appendix). During phases 1 and 2, barrier precautions were based on pre-study local isolation protocols and were not part of the study interventions. During phase 1 and phase 2, surveillance cultures were stored and processed with a 2 month delay to maintain masking of ICU personnel to the colonisation status of patients. In phase 3, screening results were immediately disclosed to staff at ICUs. Time from acquisition of swabs to start of processing (time-to-test) and from start of test until reporting of results (time-to-result) were recorded for all surveillance cultures; the sum of both was the turn-around time of tests. Interventions likely to affect outcomes (eg, central-line-associated bloodstream infection bundles or ventilator-associated pneumonia bundles, selective digestive decontamination, enhanced antimicrobial stewardship, or mupirocin use) were not introduced during the study.

Patients' demographics, reason for ICU admission, length of stay in ICU and in hospital, disposition at discharge, and 28 day mortality, as well as occurrence of bacteraemia with *S aureus*, enterococci, and Enterobacteriaceae were recorded for all patients. We collected weekly point prevalence data for bed occupancy, staffing ratios, numbers of patients ventilated, invasive devices, and isolation details (appendix). Two research nurses in each ICU were centrally trained to do hand hygiene observations. 15 observation sessions, of 15–30 min, were done every month throughout the study at the ICUs. The

	Phase 1 (n=2043)	Phase 2 (n=2072)	Phase 3	
			Conventional screening group (n=2348)	Rapid screening group (n=2513)
ICU characteristics				
Beds occupied	84.7% (18.5)	87.9% (16.6)	84.2% (17.1)	86.6% (18.3)
Nurse:patient ratio	0.55 (0.22)	0.53 (0.19)	0.55 (0.20)	0.55 (0.25)
Location before admission to ICU				
Home or private residence	38.2% (36.1–40.4)	35.6% (33.6–37.7)	38.2% (36.3–40.2)	37.2% (35.3–39.1)
Health-care facility	59.1% (56.9–61.2)	60.3% (58.1–62.4)	58.6% (56.6–60.6)	58.6% (56.6–60.5)
Unknown or other	2.7% (2.1–3.5)	4.2% (3.4–5.1)	3.2% (2.6–4.0)	4.3% (3.6–5.1)
Risk factors for colonisation before admission to ICU				
Admitted to a hospital for >24 h in the past year	52.6% (50.4–54.8)	47.6% (45.4–49.7)	56.6% (54.5–58.6)	41.4% (39.4–43.3)
Any type of surgery in the past year	20.3% (18.6–22.1)	22.2% (20.4–24.0)	20.9% (19.3–22.6)	18.9% (17.4–20.5)
Urgent or emergency surgery before admission to ICU	17.4% (15.8–19.1)	15.3% (13.8–17.0)	14.8% (13.4–16.3)	17.4% (16.0–19.0)
Patient history				
Solid tumour	14.2% (12.8–15.8)	12.0% (10.7–13.5)	13.5% (12.2–14.9)	15.8% (14.5–17.3)
Haematological cancer	3.9% (3.2–4.9)	4.1% (3.3–5.0)	4.2% (3.4–5.1)	4.1% (3.4–4.9)
Haemopoietic stem cell or bone marrow transplant	0.7% (0.4–1.2)	0.8% (0.5–1.3)	0.8% (0.5–1.3)	0.8% (0.5–1.2)
Solid organ transplant	2.2% (1.6–2.9)	1.6% (1.2–2.3)	1.8% (1.4–2.5)	1.5% (1.1–2.0)
HIV/AIDS	1.9% (1.4–2.5)	1.4% (0.9–2.0)	1.4% (1.0–2.0)	1.6% (1.2–2.2)
MRSA colonisation in the past year	3.1% (2.2–3.6)	3.1% (2.4–4.0)	2.8% (2.2–3.6)	4.5% (3.8–5.4)
VRE colonisation in the past year	0.2% (0.1–0.4)	0.2% (0.1–0.6)	0.2% (0.1–0.5)	2.1% (1.6–2.7)
HRE colonisation in the past year	2.3% (1.7–3.1)	2.7% (2.1–3.4)	3.2% (2.5–3.9)	3.0% (2.4–3.7)
Patient demographics				
Median age (IQR, years)	65 (50–76)	64 (50–75)	64 (49–76)	65 (51–77)
Men	61.0% (58.9–63.1)	60.0% (57.9–62.1)	60.9% (58.9–62.9)	59.3% (57.4–61.2)
Non-surgical reason for admission to ICU	76.5% (74.6–78.3)	79.8% (78.0–81.5)	81.4% (79.8–82.9)	73.4% (71.7–75.1)
Median APACHE-II score (IQR)*	16 (11–22)	16 (11–22)	15 (10–22)	15 (11–19)
Median SAPS-II (IQR)†	40 (28–54)	38 (27–50)	37 (26–50)	35 (24–48)
Invasive devices (during first 3 days)				
Endotracheal tube	60.4% (58.2–62.5)	60.4% (58.3–62.5)	59.4% (57.4–61.3)	52.1% (50.2–54.1)
Tracheostomy tube	4.2% (3.4–5.2)	4.3% (3.5–5.3)	3.2% (2.6–4.0)	5.8% (5.0–6.8)
Central venous catheter	69.8% (67.7–71.7)	68.3% (66.3–70.3)	61.5% (59.5–63.5)	73.5% (71.7–75.2)
Arterial intravascular catheter	64.2% (62.1–66.3)	63.4% (61.3–65.5)	59.2% (57.2–61.2)	69.0% (67.2–70.8)

Data are mean (95% CI), unless otherwise stated. Data were taken from all patients admitted for at least 3 days. ICU=intensive care unit. APACHE=Acute Physiology and Chronic Health Evaluation. SAPS=Simplified Acute Physiology Score. MRSA=meticillin-resistant *Staphylococcus aureus*. VRE=vancomycin-resistant enterococci. HRE=highly resistant Enterobacteriaceae. *Data available for 709 patients in phase 1, 780 in phase 2, and 1724 in phase 3. †Data available for 1334 patients in phase 1, 1292 in phase 2, and 3134 in phase 3.

Table 1: Baseline characteristics

sessions were randomly scheduled within three 4 h periods (0800–1200 h, 1200–1600 h, and 1600–2000 h).

We checked 10% of all electronic case report forms against data collected at each ICU, and checked all procedures for consistency once during phase 1 and once during phase 2. Data were collected through an online data entry system, consisting of an independently managed secure data processing centre, including plausibility checks for data entry.

Colonisation was defined as growth on chromogenic plates and acquisition was based on chromogenic agar results for all phases and both screening groups. If a patient was colonised according to the last screening culture, we assumed that colonisation persisted until discharge from ICU. If a patient was not colonised at the

last screening culture, the period at risk ended on that day. Colonisation and bacteraemia were classed as ICU-acquired if detected on or after the third day of admission to the ICU, after a negative swab. We did not follow up patients after discharge from ICU.

The primary endpoint was the number of patients who acquired MRSA, VRE, or HRE carriage per 100 patient-days at risk in ICU. Secondary outcomes included incidence density rate of ICU-acquired colonisation and bacteraemia for each of MRSA, VRE, and HRE; compliance with hand hygiene practices; length of stay in ICU; length of stay in hospital; and 28 day mortality. The appendix shows further secondary outcomes.

Patients admitted for fewer than 3 days were not deemed at risk for ICU-acquired colonisation and

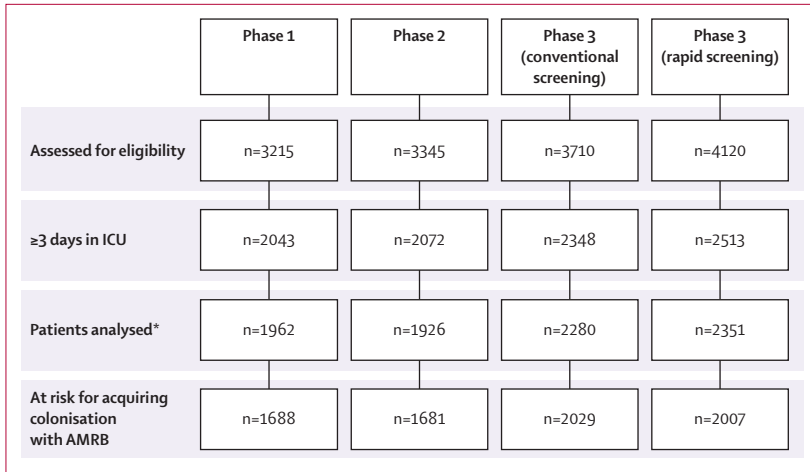


Figure 1: Study profile
 Patients at risk for acquiring colonisation with AMRB excludes all patients colonised at admission with any of MRSA, VRE, HRE, or in whom a first (admission) swab was taken after the first 2 days of ICU stay and was positive. AMRB=antimicrobial-resistant bacteria. ICU=intensive care unit. MRSA=metillin-resistant *Staphylococcus aureus*. VRE=vancomycin-resistant enterococci. HRE=highly resistant Enterobacteriaceae. *Admitted for at least 3 days, for whom admission and discharge data were available and of whom at least one nasal, rectal, or wound swab was obtained during ICU admission.

	Phase 1	Phase 2	Phase 3
At ICUs using conventional screening	n=979	n=1020	n=2280
Any (%)	13.5% (11.5–15.8)	12.5% (10.6–14.6)	10.3% (9.1–11.6)
MRSA (%)	5.4% (4.2–7.0)	3.7% (2.7–5.1)	4.1% (3.3–5.0)
VRE (%)	3.3% (2.3–4.6)	2.9% (2.1–4.2)	1.1% (0.7–1.6)
HRE			
Total (%)	6.8% (5.4–8.6)	7.0% (5.6–8.7)	6.0% (5.1–7.1)
<i>Escherichia coli</i> (%)	4.0% (2.9–5.4)	2.8% (2.0–4.1)	3.7% (3.0–4.5)
<i>Proteus, Providencia, or Morganella spp</i> (%)	0.3% (0.1–0.9)	0.4% (0.2–1.0)	0.2% (0.1–0.5)
<i>Klebsiella, Enterobacter, Serratia, or Citrobacter spp</i> (%)	3.4% (2.4–4.7)	4.8% (3.7–6.3)	2.7% (2.1–3.4)
At ICUs using rapid screening	n=983	n=906	n=2351
Any (%)	12.3% (10.4–14.5)	11.0% (9.2–13.2)	14.1% (12.7–15.5)
MRSA (%)	3.3% (2.3–4.6)	4.6% (3.5–6.2)	3.3% (2.6–4.1)
VRE (%)	3.5% (2.5–4.8)	2.2% (1.4–3.4)	5.8% (4.9–6.8)
HRE			
Total (%)	7.0% (5.6–8.8)	5.7% (4.4–7.5)	7.7% (6.7–8.8)
<i>Escherichia coli</i> (%)	2.7% (1.9–4.0)	2.2% (1.4–3.4)	3.8% (3.1–4.6)
<i>Proteus, Providencia, or Morganella spp</i> (%)	0.3% (0.1–0.9)	0.0% (0.0–0.4)	0.2% (0.1–0.5)
<i>Klebsiella, Enterobacter, Serratia, or Citrobacter spp</i> (%)	4.8% (3.6–6.3)	3.6% (2.6–5.1)	4.2% (3.5–5.1)

Data are mean (95% CI). Excludes patients for whom both the admission swab was not obtained during the first 2 days after admission, and the first swab taken during ICU admission was positive. MRSA=metillin-resistant *Staphylococcus aureus*. VRE=vancomycin-resistant enterococci. HRE=highly resistant Enterobacteriaceae. ICU=intensive care unit.

Table 2: Carriage of antimicrobial-resistant bacteria at admission to ICU

bacteraemia, and were excluded from the analyses of ICU-acquired endpoints, though they were subject to the interventions. For secondary outcomes, patients were deemed at risk for acquisition of individual pathogens if not colonised or infected with that pathogen at hospital admission.

Statistical analysis

We calculated that 960 patients per ICU would be needed to show a 10% absolute difference in the probability of colonisation between the randomised groups with a two-sided test and assuming a type I error of 0.05, a type II error of 0.2, and an intracluster correlation coefficient of 0.05. We assessed outcomes with a multilevel Poisson segmented regression analysis, allowing for random variation between ICUs for baseline levels and trends. We assessed both step changes in acquisition rate per 100 patient-days at risk and changes in trends of acquisition rate per 100 patient-days at risk (rate of change of the log weekly acquisition rate) after the introduction of each intervention.¹⁴

Potential confounding factors—calendar month and patient and ward characteristics—were fitted as covariates. We did a post-hoc exploratory analysis with time-dependent Cox regression to assess the effects of colonisation pressure on acquisition. We did the analyses with STATA (version 11), and SPSS (version 17).

This study is registered with ClinicalTrials.gov, number NCT00976638.

Role of the funding source

The sponsors had no role in study design, data collection, data analysis, data interpretation, or writing of the report. The corresponding author had full access to all the data in the study and had final responsibility for the decision to submit for publication.

Results

We screened 14 390 patients for eligibility, of whom 8976 were admitted to the ICU for at least 3 days (table 1). 8519 patients had at least one nasal, rectal, or wound swab during ICU admission and were therefore analysed (figure 1, table 2). ICUs varied from completely open to all single-patient rooms.

We obtained at least one nasal swab from 8517 (95%) of 8976 patients, a perineal swab from 8501 (95%) of 8976 patients, and a wound swab from 931 (10%) of 8976 patients. Of 41 558 hand hygiene opportunities, mean compliance was 52% in phase 1, 69% in phase 2, and 77% in phase 3 (figure 2, appendix p 11). We found no evidence of a change of behaviour of health-care workers as a result of observation (ie, the Hawthorne effect; data not shown). Based on 1188 point-prevalence measurements, median adherence to chlorhexidine body-washing was 0% in phase 1, 100% in phase 2, and 100% in phase 3 (appendix).

In ICUs assigned to rapid screening, proportions of patients for whom contact precautions were taken increased for all antimicrobial-resistant bacteria compared with phase 2. In ICUs assigned to conventional screening, only MRSA-related and VRE-related contact precautions increased, consistent with protocol (appendix). The proportion of patients in single rooms varied from 15% to 22%. This proportion exceeds the proportion of carriers,

which was less than 10% except during phase 3 in the rapid screening group (13%). Therefore, the scarcity of single rooms was unlikely to have decreased the quality of isolation procedures during phase 3. In phase 3, median turn-around time was 48 h for chromogenic tests, and 24 h for PCR (appendix, table 3).

We analysed 64997 swabs in total. At admission to ICU, 296 (3.6%) of 8184 patients were colonised with MRSA, 384 (4.7%) of 8243 were colonised with VRE, and 1014 (12.8%) of 7943 were colonised with HRE. Molecular analysis of first isolates at the central laboratory confirmed identification for 508 (92%) isolates for MRSA. For VRE, 346 of 672 (51%) isolates were *vanA* or *vanB* containing *Enterococcus faecium* and *Enterococcus faecalis*, and 235 (35%) were *Enterococcus gallinarum* and *Enterococcus casseliflavus*. Of 2129 HRE isolates, 1966 (92%) produced extended-spectrum β lactamases, of which 571 (29%) were also resistant to carbapenems, and 241 (12%) produced AmpC.

The baseline acquisition rate of antimicrobial-resistant bacteria and trends varied widely between centres (appendix), with a baseline trend (weekly incidence rate ratio) of 1.014 (95% CI 0.996–1.031; table 3). Trend in acquisition of antimicrobial-resistant bacteria decreased during phase 2 with no evidence of a stepwise change in incidence between phases 1 and 2. For phase 3, there was no incremental effect on acquisition of antimicrobial-resistant bacteria (table 3, figure 3). When comparing the rapid and conventional screening groups, we found no evidence of differences in trends of acquisition of antimicrobial-resistant bacteria, though there was evidence of a stepwise difference in the rapid screening group associated with a higher acquisition rate (table 3). However, using a combined test of both possible effects (step changes and changes to trend), we found no strong evidence to reject the null hypothesis of no overall difference between rapid and conventional groups ($p=0.06$; likelihood ratio test).

Trends in acquisition of MRSA rose during phase 1 and fell during phase 2, resulting in a mean weekly decrease of 3.6%, with no substantial step change in phase 2. No substantial step change occurred during phase 3, while trends in MRSA acquisition increased (table 3). Step changes and changes in trends of MRSA acquisition were similar in the conventional screening and rapid screening groups (table 3, appendix). For HRE and VRE, we found no evidence of step changes in acquisition or trends in either phase 2 or phase 3; acquisition in each screening group was also much the same (table 3, appendix). Cox regression confirmed the results of the Poisson model and suggested that trends in acquisition during each phase could not be wholly explained by changes in colonisation pressure. This analysis also provided some evidence that the phase 2 intervention led to a trend for reduced acquisition of VRE (appendix). Much the same results were obtained for only MRSA and VRE grouped together in an unplanned post-hoc analysis (data not shown).

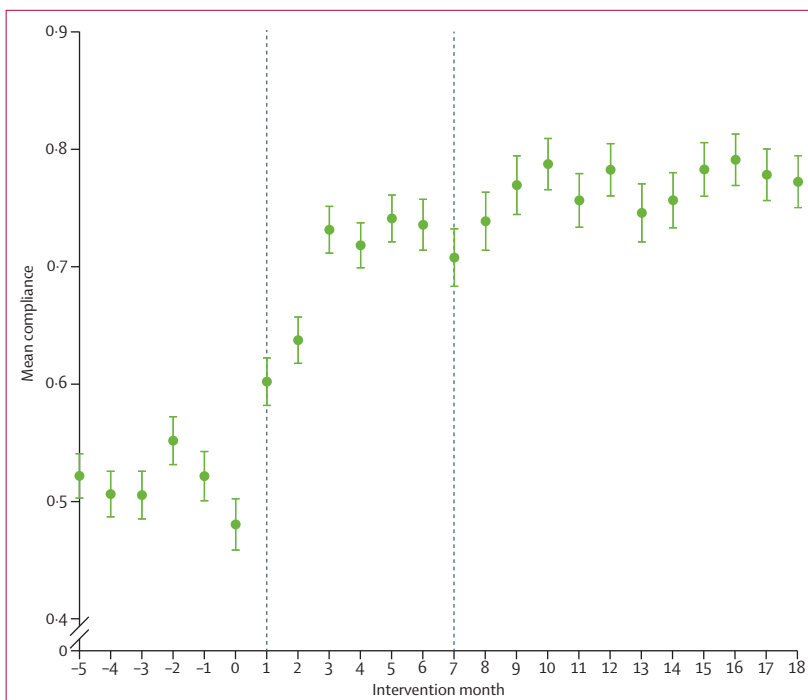


Figure 2: Mean hand hygiene compliance per month

Hand hygiene improvement intervention introduced at month 0. Error bars are 95% CIs.

The total number of ICU-acquired first bacteraemias recorded during the trial was 72 HRE, 28 MRSA, and nine VRE (*E faecium* and *E faecalis* only). Overall ICU-acquired bacteraemia caused by antimicrobial-resistant bacteria did not differ significantly between phases or between intervention groups in phase 3 (appendix). The trend in ICU-acquisition of HRE bacteraemia fell in phase 1, but not in phase 2, phase 3, or in the screening groups. For MRSA and VRE, numbers were too low to do statistical analyses.

Mean length of stay in ICU for patients at risk for acquisition of antimicrobial-resistant bacteria was 8 days in phase 1. Trend in phase 2 was 0.988 (95% CI 0.982–0.994); a net reduction of 26% (16–48) at the end of phase 2. For phase 3, trend for length of stay in ICU was 1.180 (95% CI 1.006–1.384) for ICUs using rapid screening compared with 1.082 (0.921–1.270) for those using conventional screening. Rapid screening, but not conventional screening, was also associated with a stepwise increase for phase 3. There was no evidence that hospital length of stay and mortality at day 28 were affected by any of the interventions (appendix). We assessed 223 MRSA isolates for *qacA* or *qacB*: we detected the genes in 14 of 110 isolates from phase 1 and in 16 of 113 isolates from phase 3 ($p=0.75$; data not shown).

Discussion

Improved hand hygiene combined with universal chlorhexidine body-washing was associated with reduced

	Antimicrobial-resistant bacteria	MRSA	VRE	HRE
Phase 1 trend	1.014 (0.996–1.031; p=0.12)	1.042 (1.010–1.075; p=0.01)	1.000 (0.971–1.030; p=0.99)	1.012 (0.992–1.032; p=0.25)
Phase 2 step change	0.955 (0.676–1.348; p=0.79)	1.159 (0.654–2.053; p=0.61)	0.884 (0.481–1.626; p=0.69)	0.831 (0.559–1.235; p=0.36)
Phase 2 change in trend	0.976 (0.954–0.999; p=0.04)	0.925 (0.890–0.962; p<0.001)	0.982 (0.945–1.020; p=0.36)	0.994 (0.968–1.021; p=0.66)
Phase 3 step change	0.634 (0.349–1.153; p=0.14)	0.755 (0.252–2.257; p=0.62)	0.651 (0.209–2.031; p=0.46)	0.525 (0.263–1.048; p=0.07)
Phase 3 change in trend	1.015 (0.998–1.032; p=0.09)	1.057 (1.029–1.086; p<0.001)	1.015 (0.984–1.048; p=0.34)	0.991 (0.971–1.011; p=0.35)
Phase 3 step change (rapid vs conventional screening)	1.696 (1.090–2.638; p=0.02)	1.734 (0.768–3.916; p=0.19)	1.735 (0.711–4.234; p=0.23)	1.691 (1.012–2.828; p=0.05)
Phase 3 change in trend (rapid vs conventional screening)	0.996 (0.984–1.007; p=0.46)	0.985 (0.966–1.005; p=0.15)	0.993 (0.969–1.018; p=0.59)	1.000 (0.986–1.014; p=0.99)
Likelihood ratio test (rapid vs conventional screening)	p=0.06	p=0.34	p=0.47	p=0.10

Data are IRR (95% CI) unless stated otherwise. IRR <1 represents a decrease in acquisition, whereas IRR >1 represents an increase. Cluster effects were accounted for in the analyses, and potential confounding factors (sex, age, month, invasive devices, nurse-to-patient staffing ratio, location before ICU admission, reason for admission, APACHE/SAPS, hospital, and number of days-at-risk for acquisition) were fitted as covariates. MRSA=meticillin-resistant *Staphylococcus aureus*. VRE=vancomycin-resistant enterococci. HRE=highly resistant Enterobacteriaceae. IRR=incidence rate ratio. APACHE=Acute Physiology and Chronic Health Evaluation. SAPS=Simplified Acute Physiology Score.

Table 3: Weekly acquisition of any antimicrobial-resistant bacteria, MRSA, VRE, and HRE

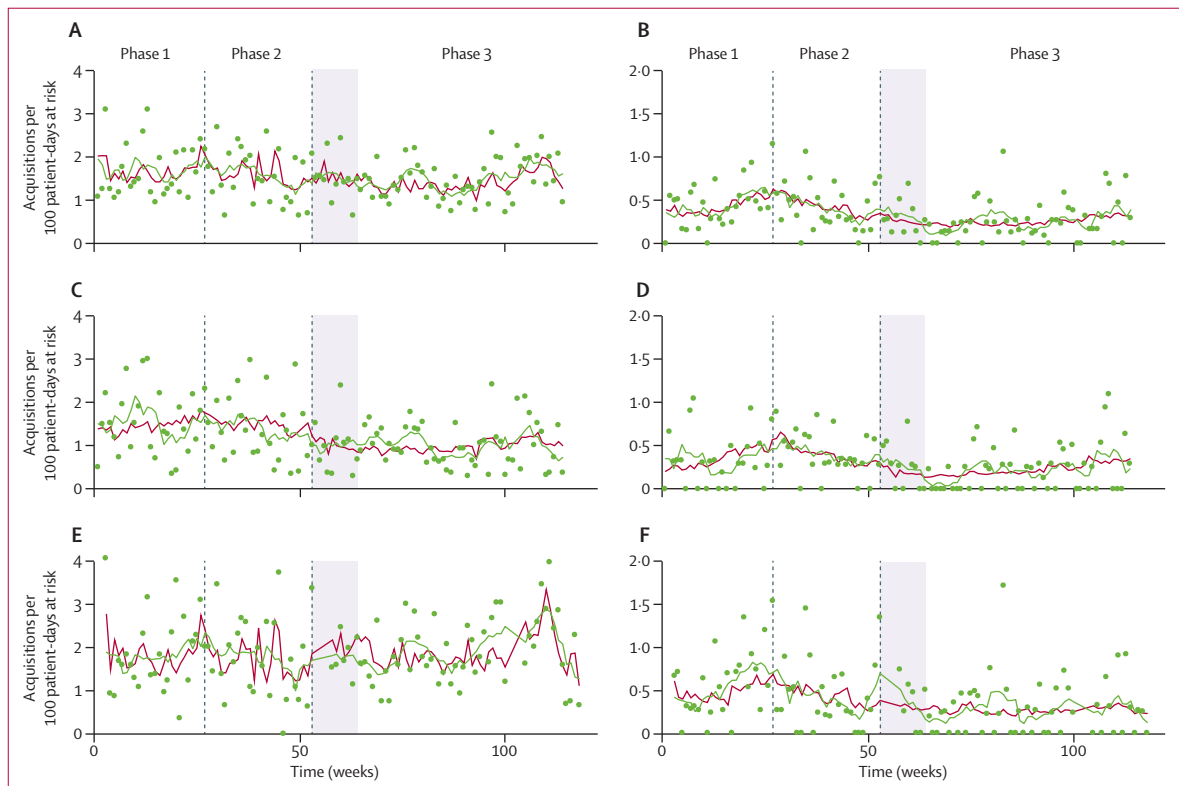


Figure 3: Acquisition of antimicrobial-resistant bacteria and meticillin-resistant *Staphylococcus aureus* per 100 patient-days at risk
 For all antimicrobial bacteria in both screening groups (A), for MRSA in both screening groups (B), for all antimicrobial bacteria in the conventional screening group (C), for MRSA in the conventional screening group (D), for all antimicrobial bacteria in the rapid screening group (E), and for MRSA in the rapid screening group (F). Shaded area is the start of phase 3. Green dots are data; green lines are 7 week moving average. Red lines are expected values from the multilevel Poisson segmented regression model. Cluster effects were accounted for, and potential confounding factors (sex, age, month, invasive devices, nurse-to-patient staffing ratio, location before ICU admission, reason for admission, APACHE and SAPS score, hospital, and number of days-at-risk for acquisition) were fitted as covariates. APACHE=Acute Physiology and Chronic Health Evaluation. SAPS=Simplified Acute Physiology Score.

acquisition of antimicrobial-resistant bacteria, mainly by reduction of MRSA acquisition. The same interventions did not reduce acquisition of HRE or VRE. Implementation of contact precautions for carriers

identified by either chromogenic or PCR screening had no incremental effect on acquisition. Optimum hand hygiene and universal chlorhexidine body-washing was also associated with reduced length of stay in ICU, and

addition of PCR-based screening was associated with increased length of stay in ICU.

Three cluster randomised studies of ICUs in the USA have evaluated similar interventions. Huskins and colleagues²⁵ showed no change in acquisition of MRSA and VRE after universal screening of patients and pre-emptive isolation followed by barrier precautions for identified carriers. However, average turn-around time of admission screening was 5.2 days, implying that many screening results were not available before patient discharge.^{18,19,25}

In a cluster-crossover study of nine ICUs, Climo and coworkers⁸ compared daily bathing with chlorhexidine-impregnated washcloths to non-antimicrobial washcloths. The intervention reduced acquisition of VRE, but not MRSA, and was associated with a significant reduction in primary bloodstream infections, primarily caused by a reduced incidence of coagulase-negative staphylococci bacteraemia. Moreover, the analysis did not account for clustering effects and might therefore have overestimated the statistical significance of the findings. In the third study,⁹ 74 ICUs were randomly assigned to one of three groups: MRSA screening and isolation; targeted decolonisation; and universal decolonisation with mupirocin nasal ointment combined with chlorhexidine body-washing. Universal decolonisation was associated with significant reductions of clinical cultures yielding MRSA, and all-cause bloodstream infections, but not MRSA bloodstream infections.

None of these studies addressed the beneficial effects of hand hygiene improvement. In our study, the gradual decrease in acquisition of antimicrobial-resistant bacteria in phase 2 coincided with a gradual increase in hand hygiene compliance, suggesting that hand hygiene improvement might have been an important component of the intervention since chlorhexidine body-washing was successfully implemented immediately in phase 2 (appendix). However, our study design precludes assessment of the relative importance of these two interventions.

Our findings add to the growing body of evidence that, in high endemicity settings, screening for MRSA carriage followed by implementation of barrier precautions is of little effectiveness for prevention of transmission.^{9,25–28} The failure to reduce HRE acquisitions might be explained—at least in part—by differences in bacterial epidemiology. Whereas HRE mainly colonise the digestive tract, MRSA and VRE can also colonise the skin and environment. Thus, patient-to-patient transmission might not be the main route of acquisition for HRE in ICUs, and other prevention methods will be needed to reduce colonisation and infections with HRE, such as antibiotic stewardship programmes or intestinal decolonisation with non-absorbable antibiotics (panel).^{13,14,29–31}

Our study has some limitations. With 13 ICUs in eight countries, many differences in resistance and unit

Panel: Research in context

Systematic review

We searched PubMed with the terms (“clinical trials as topic”[MeSH Terms]) AND (“anti-infective agents”[Pharmacological Action] OR “anti-infective agents”[MeSH Terms] OR (“anti-infective”[All Fields] AND “agents”[All Fields]) OR “anti-infective agents”[All Fields] OR “antimicrobial” AND resistance) AND (“intensive care”[MeSH Terms]) AND (“infection control”[MeSH Terms])) which returned 66 articles, of which we excluded those testing drug prophylaxis (eg, selective digestive decontamination or surgical prophylaxis) or testing prevention of specific infections (eg, catheter-related or respiratory infections) or non-resistant microorganisms and studies done outside intensive care units (ICUs). Related citations and authors’ personal references lists were also searched. We identified eight articles, including four systematic reviews. One was a systematic review³² of screening for methicillin-resistant *Staphylococcus aureus* (MRSA), which included 48 studies, of which 14 were done in ICUs, but did not include the most recent and largest study by Huang and colleagues.⁹ This meta-analysis concluded that the available evidence was insufficient to assess the effect of screening of ICU patients for MRSA carriage on MRSA acquisition, and evidence was insufficient to support or refute that, compared with no screening, screening for MRSA carriage in ICU patients decreases healthcare-associated MRSA infection or bloodstream infection. An individual-patient randomised controlled trial not included in this review found no effect of screening and isolation on MRSA acquisition rates.³³ Further evidence against routine screening has been provided by the study by Huang and colleagues,⁹ showing no significant reduction in MRSA acquisition or bloodstream infection with screening and isolation, but reduced rates with decolonisation strategies using chlorhexidine and mupirocin. Three systematic reviews^{24,34,35} of chlorhexidine bathing were done before publication of the study by Climo and coworkers,⁸ the results of which favoured the intervention when studying rates of acquisition of MRSA and vancomycin-resistant enterococci, without evidence of efficacy against multidrug-resistant Gram-negative bacteria. There was only one randomised controlled trial of isolation and segregation of colonised patients, which showed no efficacy of this measure on MRSA acquisition rate.³⁶ No controlled study addressed the effectiveness of hand hygiene or the preventive efficacy of the above measures on rates of acquisition of multidrug-resistant Gram-negative bacteria in ICU patients.

Interpretation

Our study addresses the effect of hand hygiene in combination with chlorhexidine bathing and of screening and isolation on the prevention of acquisition of major antimicrobial-resistant pathogens (multidrug-resistant bacteria, including MRSA, vancomycin-resistant enterococci, and highly resistant Enterobacteriaceae) in ICUs. Improved hand hygiene and chlorhexidine bathing are associated with a reduction in acquisition, mainly through reduced acquisition of MRSA, whereas no effect on highly resistant Enterobacteriaceae was evidenced. Screening and isolation of carriers did not further reduce acquisition of multidrug-resistant bacteria, whether screening was done with rapid testing or conventional testing. Our results show the efficacy of improved hand hygiene to reduce MRSA acquisition rates, and concur with other studies^{7,8} of the efficacy of chlorhexidine body-washing. Our finding of a lack of added preventive efficacy of screening and isolation of carriers is also consistent with several large recent controlled studies^{9,25} showing little or no efficacy of such an approach to reduce acquisition of MRSA or VRE in ICUs; however, this finding might not apply to settings with lower hand hygiene compliance. Lastly, the absence of an effect of any of our interventions on highly resistant Enterobacteriaceae suggests that new methods to control this emerging threat—eg, selective digestive decontamination—should be investigated.

characteristics existed. However, in unplanned explanatory subgroup analyses, intervention effects did not differ significantly between wards with high and low median prevalence of MRSA, VRE, or HRE at admission.

Furthermore, the effectiveness of interventions did not vary with differences according to baseline trends or levels (data not shown). The 95% CIs for primary and secondary outcomes were generally small. Because the participating ICUs represent typical ICU populations, we believe that their heterogeneity and the consistent results for high and low prevalence wards add to the external validity of our results.

Absence of screening at admission for all patients could have biased the results if missing screens did not occur at random. However, only new colonisation on day 3 or later was deemed acquired in the ICU. Of the patients admitted for at least 3 days (and thus at risk for acquisition), 95% had admission and discharge data available and at least one nasal, rectal, or wound swab during ICU stay. Of the patients admitted for at least 5 days, 96% had at least one screening swab after admission. Any such bias, if present, is therefore likely to be small.

We did not expect the large changes in length of stay, which could have affected the number of acquisitions of antimicrobial-resistant bacteria (and therefore the Poisson regression results). However, the very similar results obtained by Cox regression analysis (which takes the acquisition rate into account) suggest that changes in rates cannot be explained by changes in length of stay. Knowledge of antimicrobial-resistant bacteria carriage in phase 3 might have caused some delay in discharge of patients. The increasing length of stay during phase 3 affected both groups but was larger in the rapid screening group. This difference might be because more patients were identified as carriers in this group and such patients were identified earlier. We cannot comment on the risk of transmission of antimicrobial-resistant bacteria after ICU discharge, because it was not measured.

All participating laboratories used standardised procedures to process samples, and completed quality assessments for detection of MRSA, VRE, and HRE.^{20–22} Confirmation rates at the central laboratory were high for MRSA and HRE. For VRE only 51% of isolates contained *vanA* or *vanB*. However, analyses using only confirmed *vanA* or *vanB* data did not change our results (data not shown).

A further limitation is that improved hand hygiene combined with universal chlorhexidine body-washing was not protected by randomisation and is potentially vulnerable to maturation effects. However, the primary analysis adjusted for seasonal effects, and accounted for ICU-specific levels and trends in the baseline period. Moreover, visual inspection of MRSA outcomes in the two study groups shows a similar decrease during phase 2. Finally, patient isolations were assessed from weekly point-prevalence, and not monitored on a daily patient-level basis and adherence to contact precautions was not audited.

Contributors

MJMB, CB-B, BSC, and LPGD designed the study. MJMB and CB-B supervised the study. LPGD searched the published work and supervised

data collection. BSC and LPGD provided the figures. MJMB, CB-B, BSC, MJDD, and LPGD analysed and interpreted data. MJMB, CB-B, BSC, and LPGD wrote the report. All other authors collected and interpreted data, and helped to revise the report.

Participating staff

Data collection—E Aires, A Antoniadou, A Armaganidis, F Blairon, J Carneiro, D Chaskou, P Coppadoro, A-P Dias, I Drinovec, M Elia, V Exarchou, A Flet, J Fournier, N Gillet, A Jaklič, M Jereb, A Kane, E Karkali, J Kieffer, P Kirpach, C Landelle, F Landercy, C Lawrence, P Legrand, V Lopes, E Magira, F Marco, J A Martínez, A Melbärde-Kelmere, B Misset, R Monte, E Moreno, J C Nguyen, M Novak, D Orazi, E Papadomichelakis, J Papaparaskevas, M Paris, J Pavleas, F Pimenta, R Piñer, A Radouan, M-G Ramunno, M Reis, I Rinaldi, E Ronco, A San Jose, K Seme, A Skiada, S Trapassi, M Tronci, M Verachten, J Vila, K Vrankar, M Winkler, S Zagavierou; **data monitoring and collection**—M Hopman; **data management**—F Leus, J Schotsman, J Zwerver.

Conflicts of interest

We declare that we have no conflicts of interest.

Acknowledgments

This study was supported by the European Commission under the Life Science Health Priority of the 6th Framework Program (MOSAR network contract LSHP-CT-2007-037941). MJMB was supported by the Netherlands Organization of Scientific Research (VICI NWO Grant 918.76.611). BSC was supported by The Oak Foundation and The Medical Research Council and Department for International Development (grant number MR/K006924/1) and works within the Wellcome Trust–Mahidol University–Oxford Tropical Medicine Research Programme supported by the Wellcome Trust (089275/Z/09/Z). We thank B Allegranzi and A Agostinho for training assistance and materials.

References

- Goldmann DA, Weinstein RA, Wenzel RP, et al. Strategies to prevent and control the emergence and spread of antimicrobial-resistant microorganisms in hospitals. A challenge to hospital leadership. *JAMA* 1996; **275**: 234–40.
- WHO. WHO guidelines on hand hygiene in health care. Geneva: World Health Organization, 2009.
- Batra R, Cooper BS, Whiteley C, Patel AK, Wyncoll D, Edgeworth JD. Efficacy and limitation of a chlorhexidine-based decolonization strategy in preventing transmission of methicillin-resistant *Staphylococcus aureus* in an intensive care unit. *Clin Infect Dis* 2010; **50**: 210–17.
- Climo MW, Sepkowitz KA, Zuccotti G, et al. The effect of daily bathing with chlorhexidine on the acquisition of methicillin-resistant *Staphylococcus aureus*, vancomycin-resistant *Enterococcus*, and healthcare-associated bloodstream infections: results of a quasi-experimental multicenter trial. *Crit Care Med* 2009; **37**: 1858–65.
- Gould IM, MacKenzie FM, MacLennan G, Pacitti D, Watson EJ, Noble DW. Topical antimicrobials in combination with admission screening and barrier precautions to control endemic methicillin-resistant *Staphylococcus aureus* in an intensive care unit. *Int J Antimicrob Ag* 2007; **29**: 536–43.
- Raineri E, Crema L, De Silvestri A, et al. Methicillin-resistant *Staphylococcus aureus* control in an intensive care unit: a 10 year analysis. *J Hosp Infect* 2007; **67**: 308–15.
- O'Horo JC, Silva GLM, Munoz-Price LS, Safdar N. The efficacy of daily bathing with chlorhexidine for reducing healthcare-associated bloodstream infections: a meta-analysis. *Infect Control Hosp Epidemiol* 2012; **33**: 257–67.
- Climo MW, Yokoe DS, Warren DK, et al. Effect of daily chlorhexidine bathing on hospital-acquired infection. *N Engl J Med* 2013; **368**: 533–42.
- Huang SS, Septimus E, Kleinman K, et al. Targeted versus universal decolonization to prevent ICU infection. *N Engl J Med* 2013; **368**: 2255–65.
- Montecalvo MA, Jarvis WR, Uman J, et al. Infection-control measures reduce transmission of vancomycin-resistant enterococci in an endemic setting. *Ann Intern Med* 1999; **131**: 269–72.
- Huang SS, Yokoe DS, Hinrichsen VL, Spurchise LS, Datta R, Miroshnik IARP. Impact of routine intensive care unit surveillance cultures and resultant barrier precautions on hospital-wide methicillin-resistant *Staphylococcus aureus* bacteremia. *Clin Infect Dis* 2006; **43**: 971–78.

- 12 Cooper BS. Isolation measures in the hospital management of methicillin resistant *Staphylococcus aureus* (MRSA): systematic review of the literature. *BMJ* 2004; **329**: 533–40.
- 13 Ramsay CR, Matowe L, Grilli R, Grimshaw JM, Thomas RE. Interrupted time series designs in health technology assessment: lessons from two systematic reviews of behavior change strategies. *Int J Technol Assess Health Care* 2003; **19**: 613–23.
- 14 Eliopoulos GM, Shardell M, Harris AD, et al. Statistical analysis and application of quasi experiments to antimicrobial resistance intervention studies. *Clin Infect Dis* 2007; **45**: 901–07.
- 15 Malhotra-Kumar S, Abrahantes JC, Sabiiti W, et al. Evaluation of chromogenic media for detection of methicillin-resistant *Staphylococcus aureus*. *J Clin Microbiol* 2010; **48**: 1040.
- 16 Malhotra-Kumar S, Haccuria K, Michiels M, et al. Current trends in rapid diagnostics for methicillin-resistant *Staphylococcus aureus* and glycopeptide-resistant enterococcus species. *J Clin Microbiol* 2008; **46**: 1577–87.
- 17 Gazin M, Paasch F, Goossens H, Malhotra-Kumar S, on behalf of the MOSAR WP2 and SATURN WP1 Study Teams. Current trends in culture-based and molecular detection of extended-spectrum-lactamase-harboring and carbapenem-resistant Enterobacteriaceae. *J Clin Microbiol* 2012; **50**: 1140–46.
- 18 Gazin M, Lammens C, Goossens H, Malhotra-Kumar S, on behalf of the MOSAR WP2 Study Team. Evaluation of GeneOhm VanR and Xpert *vanA/vanB* molecular assays for the rapid detection of vancomycin-resistant enterococci. *Eur J Clin Microbiol Infect Dis* 2011; **31**: 273–76.
- 19 Malhotra-Kumar S, Van Heirstraeten L, Lee A, et al. Evaluation of molecular assays for rapid detection of methicillin-resistant *Staphylococcus aureus*. *J Clin Microbiol* 2010; **48**: 4598–601.
- 20 Gazin M, Lee A, Derde LPG, et al. Culture-based detection of methicillin-resistant *Staphylococcus aureus* by a network of European laboratories: an external quality assessment study. *Eur J Clin Microbiol Infect Dis* 2011; **31**: 1765–70.
- 21 Gazin M, Lammens C, Derde LPG, et al. External quality assessment of culture-based detection of extended spectrum beta-lactamase producing Gram-negative bacteria by a network of European laboratories. 22nd ECCMID; March 31–April 3, 2012; London.
- 22 Gazin M, Lammens C, Derde LPG, et al. External quality assessment of culture-based detection of vancomycin-resistant enterococci by a network of European laboratories. 22nd ECCMID; March 31–April 3, 2012; London.
- 23 Mayer S. Distribution of the antiseptic resistance genes *qacA*, *qacB* and *qacC* in 497 methicillin-resistant and -susceptible European isolates of *Staphylococcus aureus*. *J Antimicrob Chemother* 2001; **47**: 896–97.
- 24 Derde LPG, Dautzenberg MJD, Bonten MJM. Chlorhexidine body washing to control antimicrobial-resistant bacteria in intensive care units: a systematic review. *Intensive Care Med* 2012; **38**: 931–39.
- 25 Huskins WC, Huckabee CM, O'Grady NP, et al. Intervention to reduce transmission of resistant bacteria in intensive care. *N Engl J Med* 2011; **364**: 1407–18.
- 26 Gurieva T, Bootsma MC, Bonten MJ. Successful Veterans Affairs initiative to prevent methicillin-resistant *Staphylococcus aureus* infections revisited. *Clin Infect Dis* 2012; **54**: 1618–20.
- 27 Gurieva T, Bootsma MCJ, Bonten MJM. Cost and effects of different admission screening strategies to control the spread of methicillin-resistant *Staphylococcus aureus*. *PLoS Comput Biol* 2013; **9**: e1002874.
- 28 Robotham JVJ, Graves NN, Cookson BDB, et al. Screening, isolation, and decolonisation strategies in the control of methicillin-resistant *Staphylococcus aureus* in intensive care units: cost effectiveness evaluation. *BMJ* 2010; **343**: d5694–94.
- 29 de Smet AMGA, Kluytmans JAJW, Cooper BS, et al. Decontamination of the digestive tract and oropharynx in ICU patients. *N Engl J Med* 2009; **360**: 20–31.
- 30 Oostdijk EAN, de Smet AMGA, Blok HEM, et al. Ecological effects of selective decontamination on resistant gram-negative bacterial colonization. *Am J Respir Crit Care Med* 2010; **181**: 452–57.
- 31 Oostdijk EAN, de Smet AMGA, Kesecioglu J, Bonten MJM, Dutch SOD-SDD Trialists Group. Decontamination of cephalosporin-resistant Enterobacteriaceae during selective digestive tract decontamination in intensive care units. *J Antimicrob Chemother* 2012; **67**: 2250–53.
- 32 Glick SB, Samson DJ, Huang E, Vats V, Weber S, Aronson N. Screening for methicillin-resistant *Staphylococcus aureus* (MRSA). Rockville (MD): Agency for Healthcare Research and Quality (US), 2013.
- 33 Camus C, Bellissant E, Legras A, et al. Randomized comparison of 2 protocols to prevent acquisition of methicillin-resistant *Staphylococcus aureus*: results of a 2-center study involving 500 patients. *Infect Control Hosp Epidemiol* 2011; **32**: 1064–1072.
- 34 Afonso E, Llauradó M, Gallart E. The value of chlorhexidine gluconate wipes and prepacked washcloths to prevent the spread of pathogens—a systematic review. *Aust Crit Care* 2013; published online July 1. DOI:10.1016/j.aucc.2013.05.001.
- 35 Karki S, Cheng AC. Impact of non-rinse skin cleansing with chlorhexidine gluconate on prevention of healthcare-associated infections and colonization with multi-resistant organisms: a systematic review. *J Hosp Infect* 2012; **82**: 71–84.
- 36 Cepeda JA, Whitehouse T, Cooper B, et al. Isolation of patients in single rooms or cohorts to reduce spread of MRSA in intensive-care units: prospective two-centre study. *Lancet* 2005; **365**: 295–304.